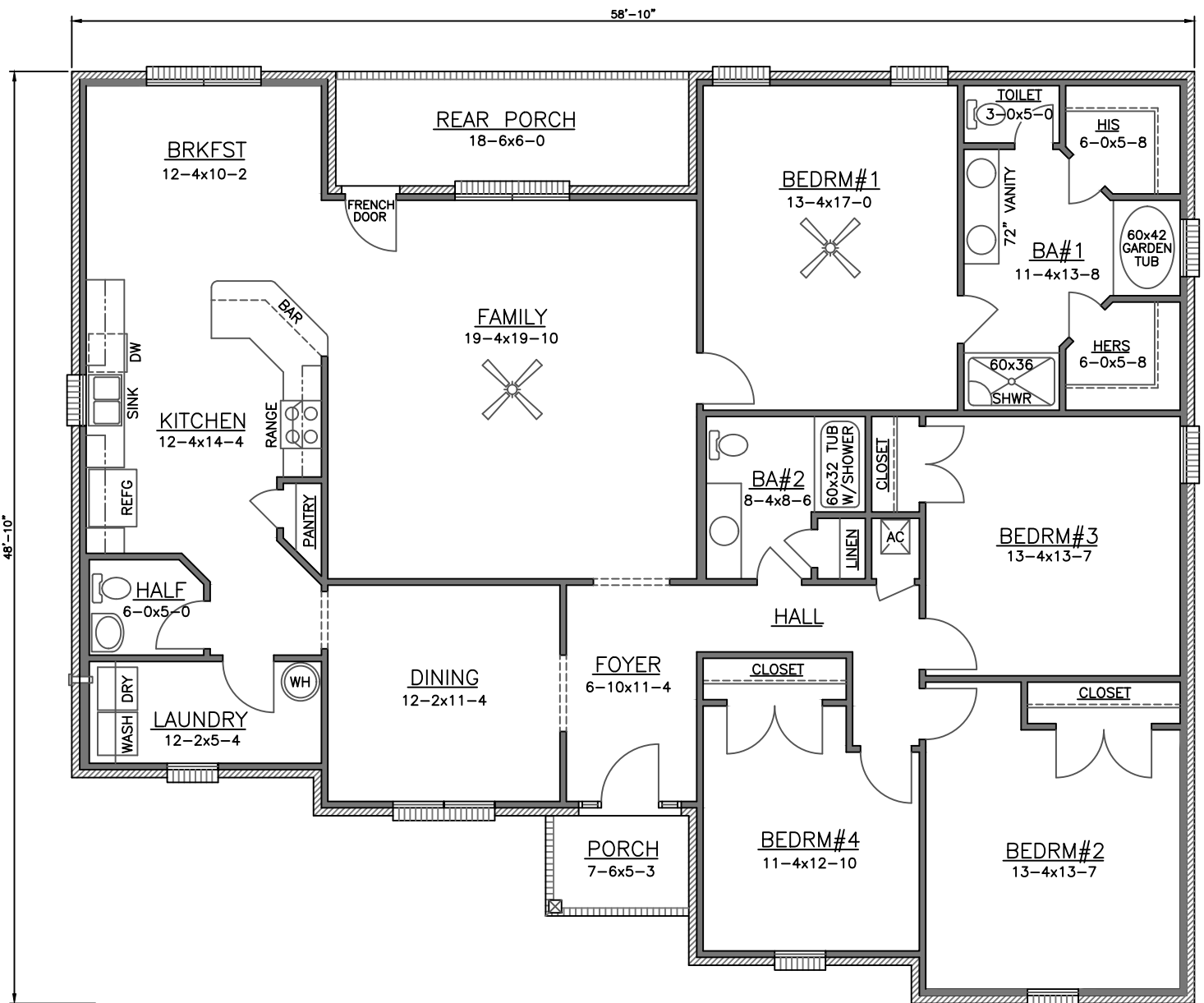




FRONT ELEVATION

LIVING	2395
FRONT PORCH	39
REAR PORCH	111
TOTAL	2545 SQ FT



FLOOR PLAN

NOTE: Floor plan & Elevations are subject to change. Dimensions and Footage are approximate. Floor plan & Elevations may reflect upgrades. Contract price is based on final construction plans.

BILL DOBBINS HOMES INC
 PLAN NO. 1900-6
 "LEXINGTON"