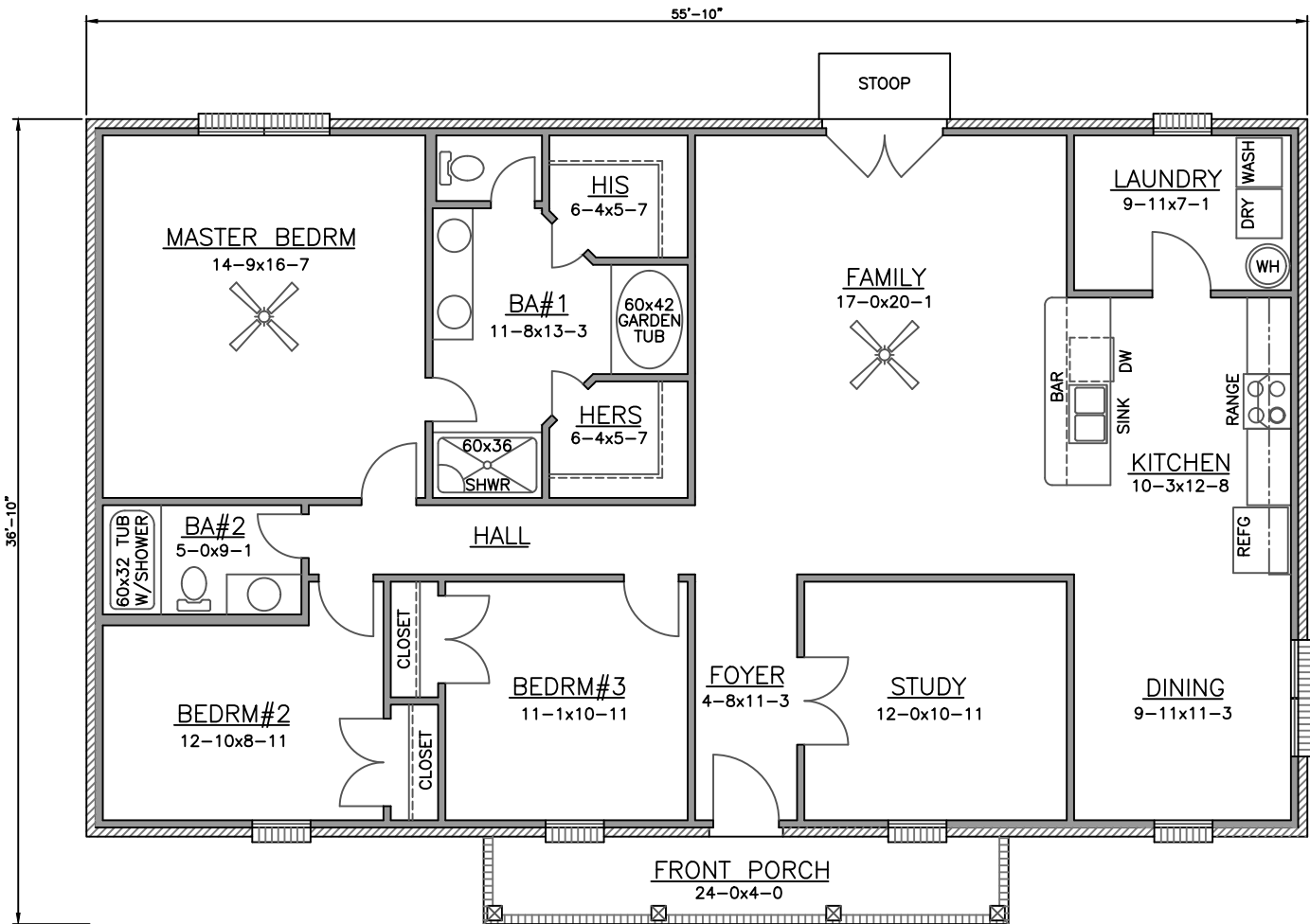




FRONT ELEVATION

LIVING	1833 SQ FT
FRONT PORCH	96
REAR STOOP	18
TOTAL	1947 SQ FT



FLOOR PLAN

NOTE: Floor plan & Elevations are subject to change.
 Dimensions and Footage are approximate.
 Floor plan & Elevations may reflect upgrades.
 Contract price is based on final construction plans.

BILL DOBBINS HOMES INC.
 PLAN NO. 1900-3
 "DAKOTA"