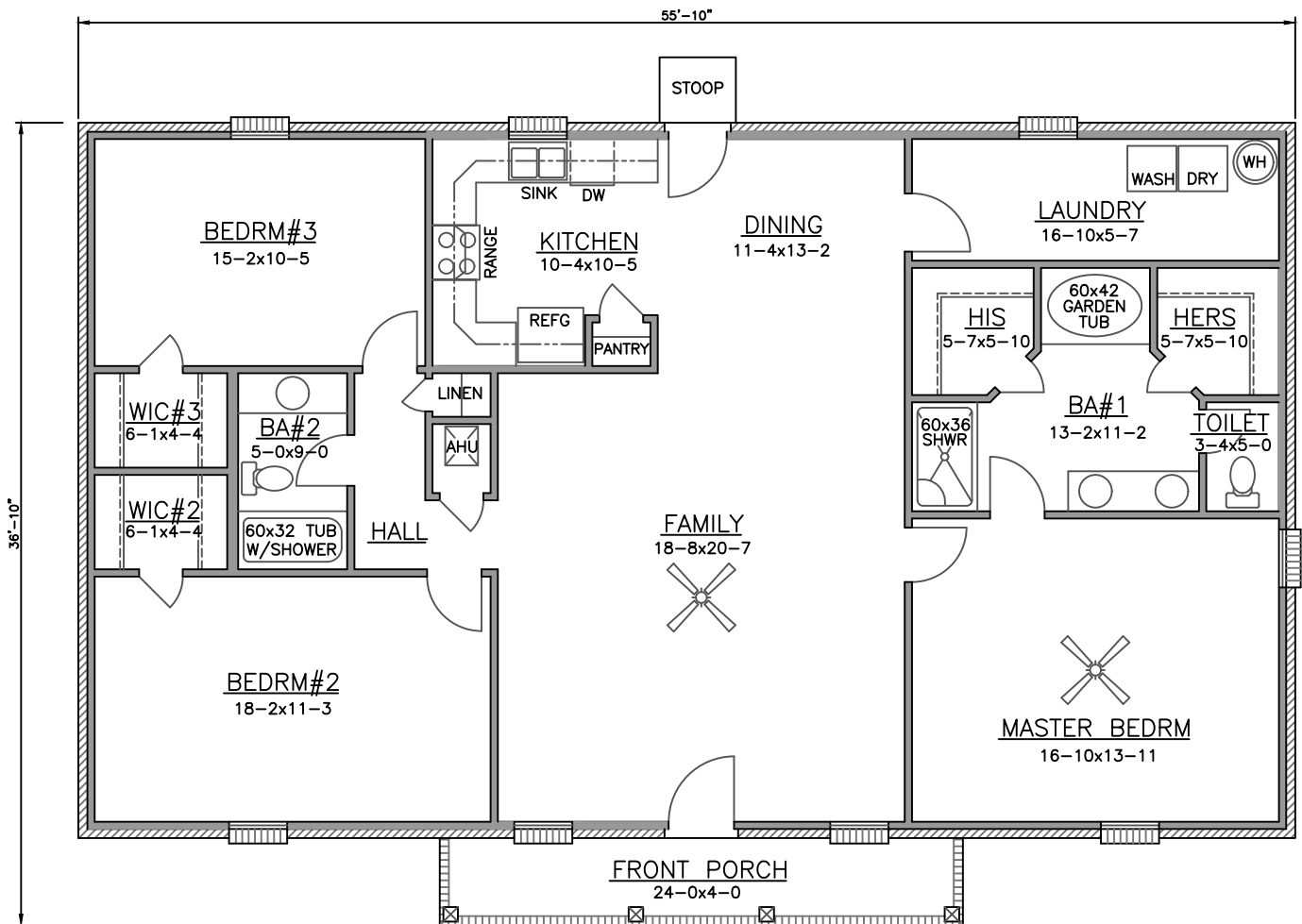




FRONT ELEVATION

LIVING	1833 SQ FT
FRONT PORCH	96
REAR STOOP	10
<b>TOTAL</b>	<b>1939 SQ FT</b>



FLOOR PLAN

BILL DOBBINS HOMES INC.  
 PLAN NO. 1900-2  
 "CHARLOTTE"

NOTE: Floor plan & Elevations are subject to change.  
 Dimensions and Footage are approximate.  
 Floor plan & Elevations may reflect upgrades.  
 Contract price is based on final construction plans.