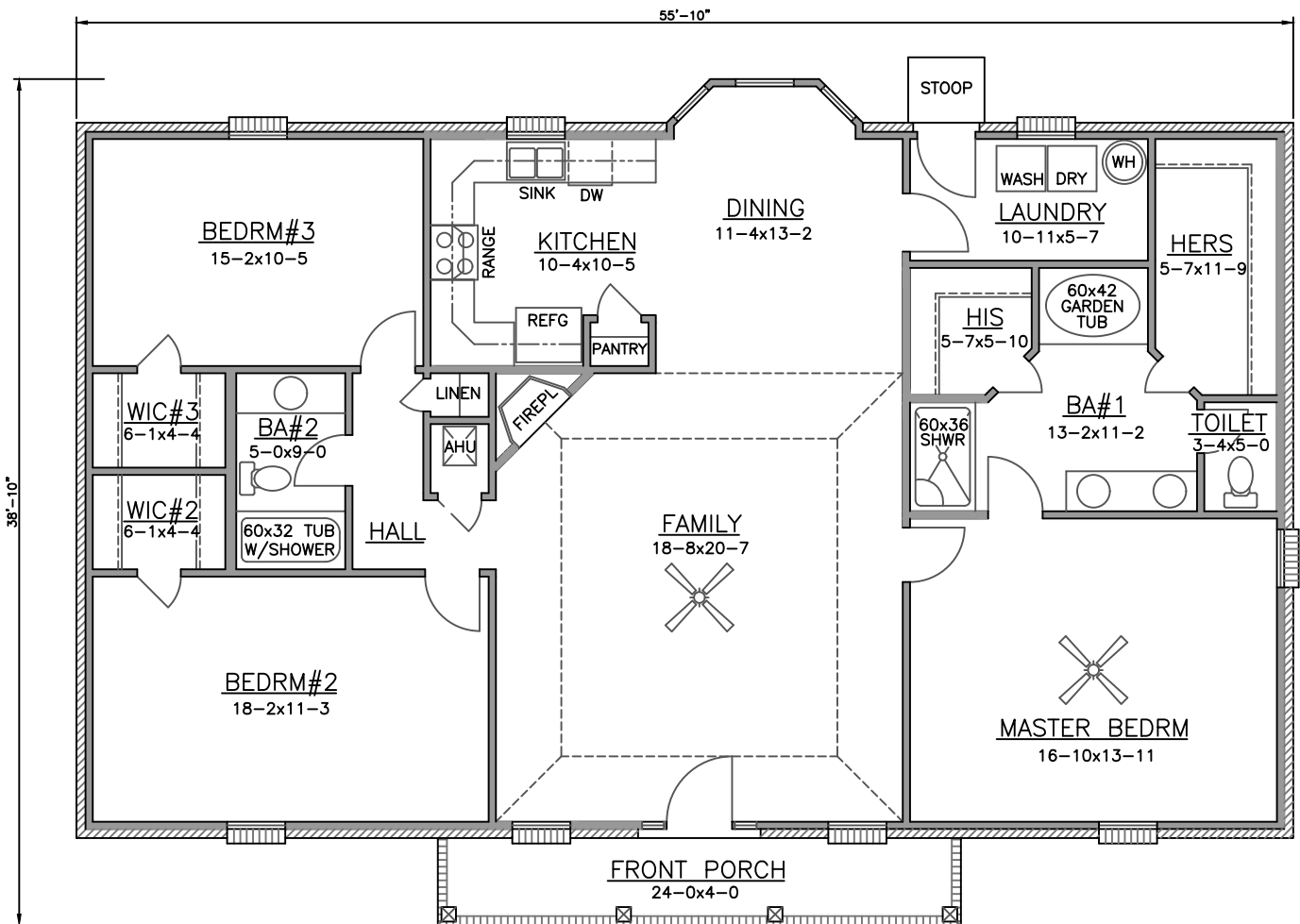




FRONT ELEVATION

LIVING	1847 SQ FT
FRONT PORCH	96
REAR STOOP	10
TOTAL	1953 SQ FT



FLOOR PLAN

BILL DOBBINS HOMES INC.
 PLAN NO. 1900-01
 "MODEL"

NOTE: Floor plan & Elevations are subject to change.
 Dimensions and Footage are approximate.
 Floor plan & Elevations may reflect upgrades.
 Contract price is based on final construction plans.